



DG Communications Networks,
Content and Technology

H2020 FET Proactive info day

FET Submission and Evaluation

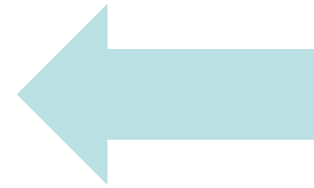
Dalibor Grgec

FET Unit

20 Jan 2014

FET submission and evaluation

- FET-Open & FET-Pro-active
 - **Specific evaluation procedure**
- FET-HPC
 - **Standard submission and evaluation procedure**
- FET-Flagship
 - **Specific evaluation procedure**



An end to end light and fast scheme

- *Call*
 - **FET- Open**
 - Continuously open
 - Cut-off date every 6 months March & Sept, starting as of Sept 2014
 - **FET- Proactive**
 - Fixed deadline call: 31st March 2014
- *Submission & Evaluation*
 - 'Short' proposals , 1 step submission using FET specific template
 - 1 stage evaluation based on FET specific evaluation criteria
 - High quality peer review – 4 experts per proposals to best address multi-disciplinary nature of FET research
- *Grant*
 - Grant based on proposal 'as-is' -> No negotiation
 - All information needed has to be in the proposal !
 - Time to contract of max. 8 months from call deadline/cut-off date
 - ESR within 5 months, contracts within 3 extra months !

Eligibility

- Standard criteria
- +1 FET specific criteria
 - **The part B (cover page and sections 1, 2 and 3) is strictly limited to 16 A4 pages and shall consist of:**
 - A single A4 title page with acronym, title and abstract of the proposal.
 - Maximum 15 A4 pages consisting of an S&T section (section 1), an Impact section (section 2) and an Implementation section (section 3).

A proposal that do not comply with these page limits will be declared ineligible.

- **No applicable to Coordination and Support Actions**

One step submission and evaluation

Part A: Administrative part of the proposal

Part B : Scientific part of the proposal

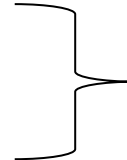
- **16 pages – core proposal**

Cover page

Section 1: S&T Excellence

Section 2: Impact

Section 3: Implementation



Cover page strictly limited to 1 page!

Section 1,2 & 3 are strictly limited to 15 pages!

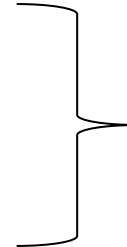
- **Additional information**

Section 4: Members of the consortium

- E.g. legal entity, CV, subcontract, third party

Section 5: Ethics and Security

- Ethics self-assessment & supporting documents
- Security checklist



Section 4 & 5 are not covered by the page limit.

- FET annotated proposal template available on-line

- Proposals are not anonymous!

Evaluation criteria (Research project)



Excellence	Impact	Implementation
<ul style="list-style-type: none"><input type="checkbox"/> Clarity of targeted breakthrough and its specific science and technology contributions towards a long-term vision.<input type="checkbox"/> Novelty, level of ambition and foundational character.<input type="checkbox"/> Range and added value from interdisciplinarity.<input type="checkbox"/> Appropriateness of the research methods.	<ul style="list-style-type: none"><input type="checkbox"/> Importance of the new technological outcome with regards to its transformational impact on technology and/or society.<input type="checkbox"/> Quality of measures for achieving impact on science, technology and/or society.<input type="checkbox"/> Impact from empowerment of new and high potential actors towards future technological leadership.	<ul style="list-style-type: none"><input type="checkbox"/> Quality of the workplan and clarity of intermediate targets.<input type="checkbox"/> Relevant expertise in the consortium.<input type="checkbox"/> Appropriate allocation and justification of resources (person-months, equipment, budget).
Threshold: 4/5 Weight: 60%	Threshold: 3,5/5 Weight: 20%	Threshold: 3/5 Weight: 20%

Evaluation criteria (CSA)

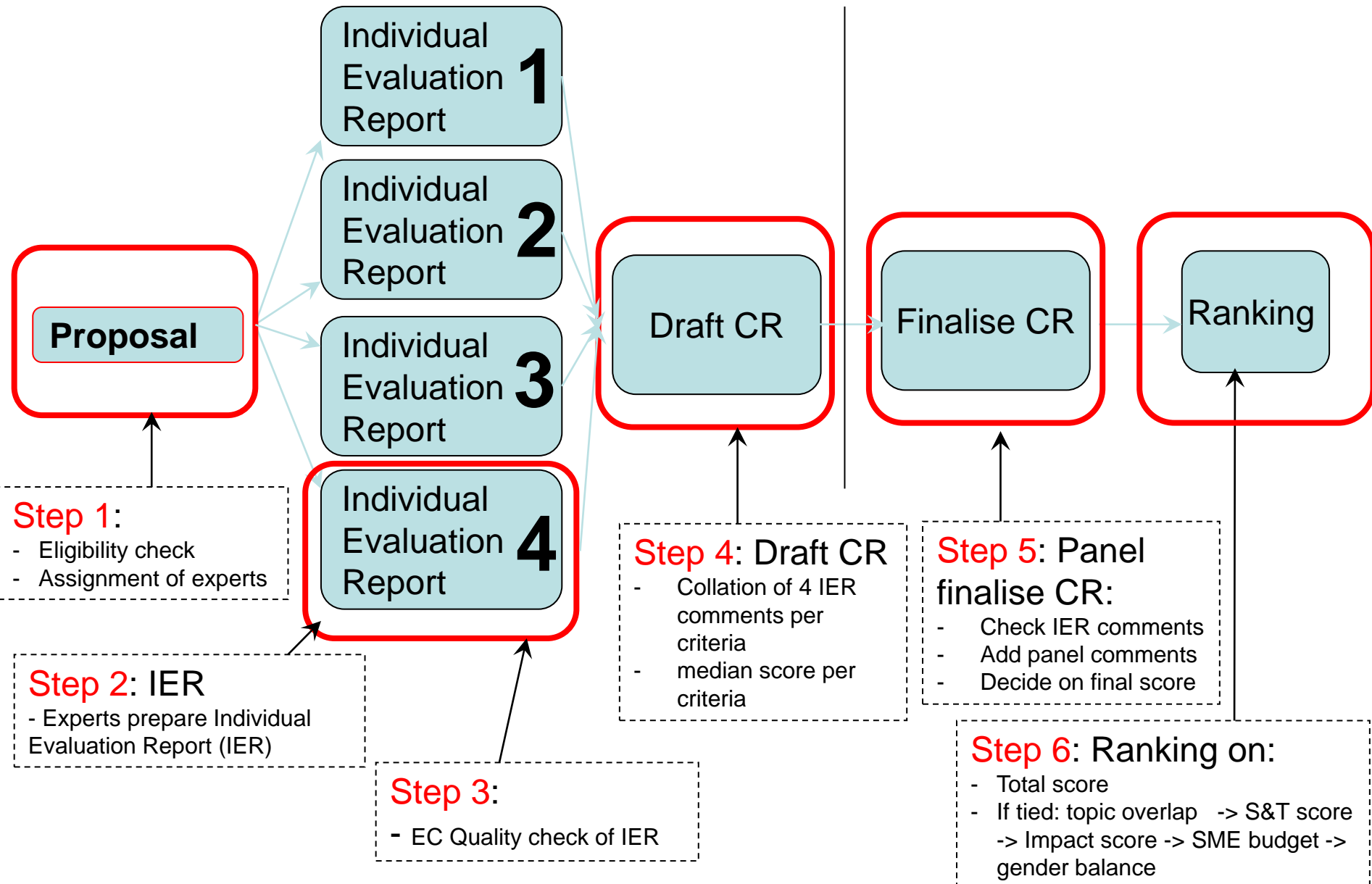


Excellence	Impact	Implementation
<ul style="list-style-type: none"><input type="checkbox"/> Clarity of objectives<input type="checkbox"/> Contribution to the coordination and/or support of high-risk and high-impact research for new or emerging areas or horizontally<input type="checkbox"/> Appropriateness of the coordination and/or support activities	<ul style="list-style-type: none"><input type="checkbox"/> Transformational impact on the communities and/or practices for high-risk and high-impact research<input type="checkbox"/> Appropriateness of measures for spreading excellence, use of results, and dissemination of knowledge, including engagement with stakeholders	<ul style="list-style-type: none"><input type="checkbox"/> Quality of work plan and management<input type="checkbox"/> Relevant expertise in the consortium<input type="checkbox"/> Appropriate allocation and justification of resources (person-months, equipment, budget).
Threshold: 3/5 Weight: 40%	Threshold: 3/5 Weight: 40%	Threshold: 3/5 Weight: 20%

Evaluation process

Remote phase

Panel in Brussels



Final CR=> Evaluation Summary Report

- S&T Excellence: score /5
 - Panel comments
 - Expert 1 comments
 - Expert 2 comments
 - Expert 3 comments
 - Expert 4 comments
- Impact: score /5
 - Panel comments
 - Expert 1 comments
 - Expert 2 comments
 - Expert 3 comments
 - Expert 4 comments
- Implementation: score /5
 - Panel comments
 - Expert 1 comments
 - Expert 2 comments
 - Expert 3 comments
 - Expert 4 comments
- Total weighted score /5